

In this tutorial, we'll explain how to create a print ready self cling sticker artwork in Adobe Illustrator™.

Let's assume you have a rectangular company logo you want to make into a self cling sticker. In this example the logo is an EPS file (rectangle_logo.eps), but it may be a PSD, JPG, TIF, GIF, PNG etc.



rectangle_logo.eps

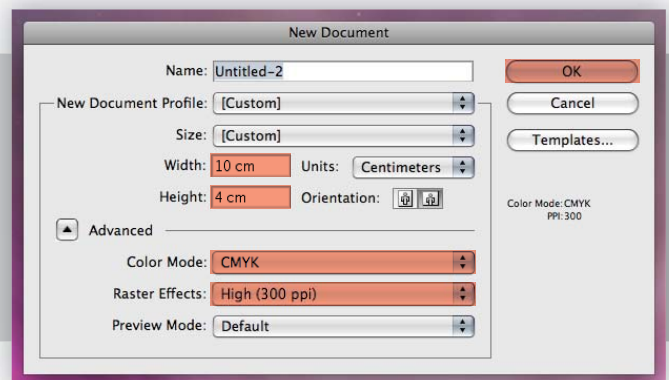


final self cling sticker

Let's start!

Step 1 - Create the Document according to the size of the sticker

Open a new Illustrator document in CMYK color mode. In this case the sticker is of 10cm by 4cm. This probably isn't your default setting so make sure to change the Units and Color Mode for this one.



Step 2 - Place the rectangle_logo.eps in the new file

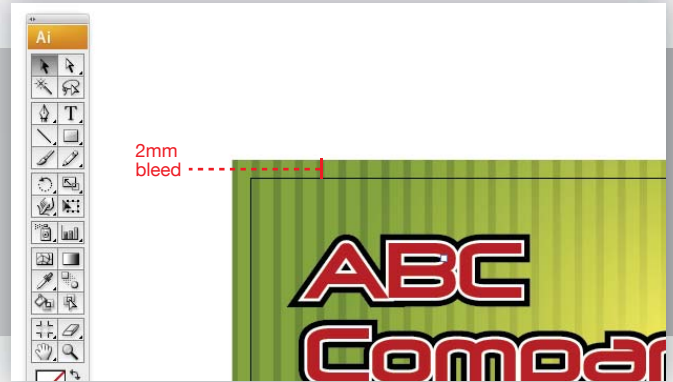
Go to File > Place or just copy and paste from the original file. Enlarge or decrease the size of the artwork to match the size of artboard.

Tip: If its a bitmap artwork (PSD, JPG, TIF, GIF, PNG etc.), make sure its atleast 300DPI for the best printing results.

Step 3 - Create the bleed

Extend the artwork by 2mm from all sides. That is your bleed.

Note: Bleed is there to allow a little tolerance while cutting, so as to prevent white on the edges of your sticker.



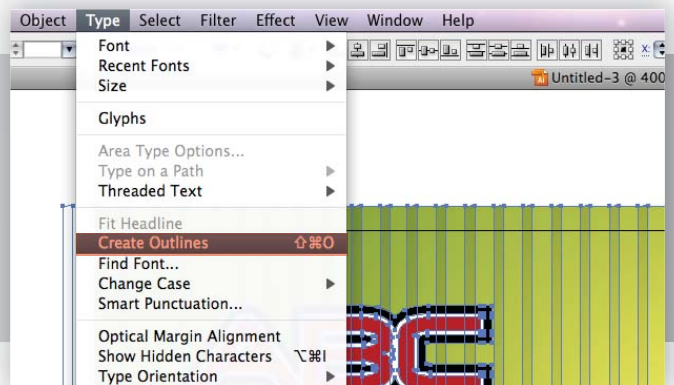
Step 4 - Make sure your artwork is in centre of the artboard.

If the artwork isn't centred to the artboard, the final cut sticker will be off-centred. (As shown)

Step 5 - Convert to outlines and save

Select everything (cmd/ctrl + A) and convert into outlines by going to Type > Create Outlines (shift + cmd/ctrl + O). Save the file as PDF.

Note: Converting everything to outlines helps us to tackle the font issues.



Finished!

Your pdf artwork is ready to upload.