

In this tutorial, we'll explain how to create print ready contour-cut self cling sticker artwork in Adobe Illustrator™.

Let's assume you have a company logo you want to make into a contour-cut self cling sticker. In this example the logo is an EPS file (contour_logo.eps), but it may be a PSD, JPG, TIF, GIF, PNG etc.



contour_logo.eps

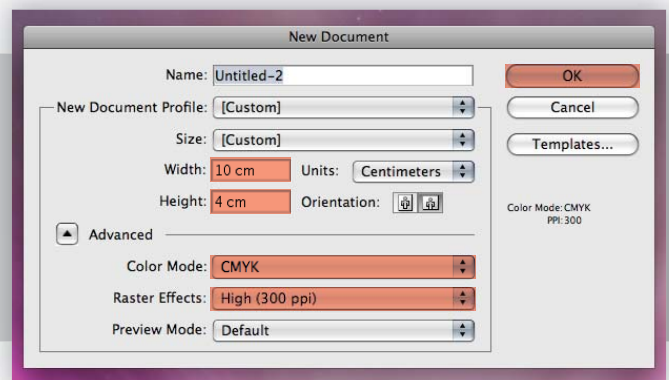


final contour-cut self cling sticker

Let's start!

Step 1 - Create the Document and decide the size of the sticker

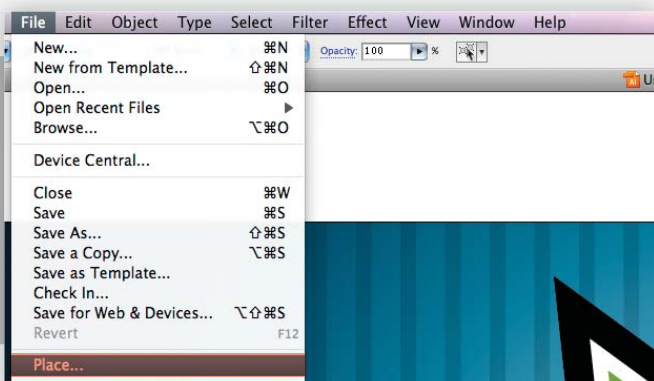
Create a new Illustrator document to the size you'd like your finished sticker. This probably isn't your default setting so make sure to change the Units and Color Mode for this one.

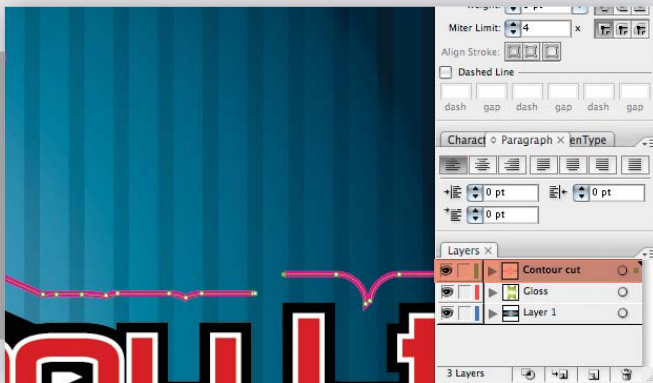


Step 2 - Place the contour_logo.eps in the new file

Go to File > Place or just copy and paste from the original file. Enlarge or decrease the size of the artwork to match the size of artboard.

Tip: If its a bitmap artwork (PSD, JPG, TIF, GIF, PNG etc.), make sure its atleast 300DPI for the best printing results.





Step 4 - Create the contour-cut line

Using Illustrators drawing and shape tools create the cut line for the sticker. Place this on a new layer.

Tip: It really helps us to print your stickers better if you rename the layer as 'contour-cut' and colour the outline in bright magenta.

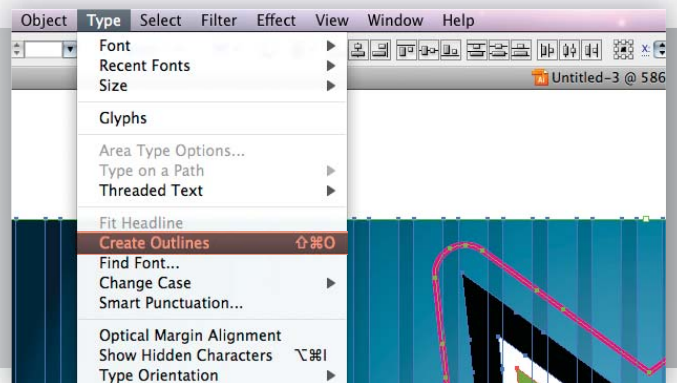


Step 5 - Convert to outlines and save

Select everything (cmd/ctrl + A) and convert into outlines by going to Type > Create Outlines (shift + cmd/ctrl + O). Any embedded bitmap images (e.g. jpeg/tiff/gif files) must be rasterised (object > rasterise).

Save the file as a pdf using the 'High Quality Print' setting.

Note: Converting everything to outlines helps us to tackle the font issues.



Finished!

Your pdf artwork is ready to upload.